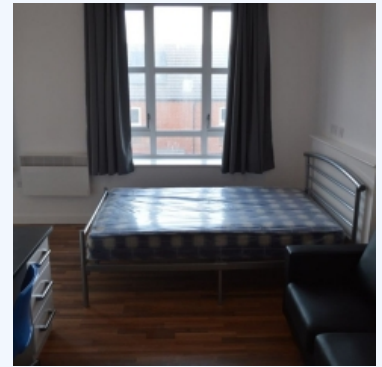


# Block B, One Bed, CLYDE COURT  
(STUDENTS - FURNISHED)

To Let. £ 145.00 /PW/PP



**9-13 Erskine Street, Leicester, Leicester, Leicestershire, LE1  
2AU**

Clyde Court offers stylish apartments which have a modern open plan kitchens with fitted wall and base units, integral ovens with electric hob, and fridges.

These stylish apartments have modern open plan kitchens with fitted wall and base units, integral ovens with electric hob, and fridges. With open plan living rooms, wall mounted flat screen televisions are an optional extra. Each bedroom will accommodate a full size double bed, bedrooms have a fitted wardrobe, along with a desk/dressing table. The shower room is finished to a high standard comprising low level WC, wash hand basin and shower cubicle with electric shower. The property is fully double glazed and has electric heating. All apartments will have access to laundry facilities located within the development.

**BASE INFORMATION:**

Rooms	: 1
Bed	: 1
Bath	: 1

**CONVENIENCE:**

**General Amenities:** Electric Hot Water, Fitted Wardrobes, Bed, Furnished,  
**Accessibility Amenities:** Close to DMU,  
**Appliance Amenities:** Microwave, Fridge,  
**Community Amenities:** Gym,  
**Security Amenities:** CCTV,

**NEIGHBORHOOD:**

Town center	: 10 minutes by Walk
-------------	----------------------